

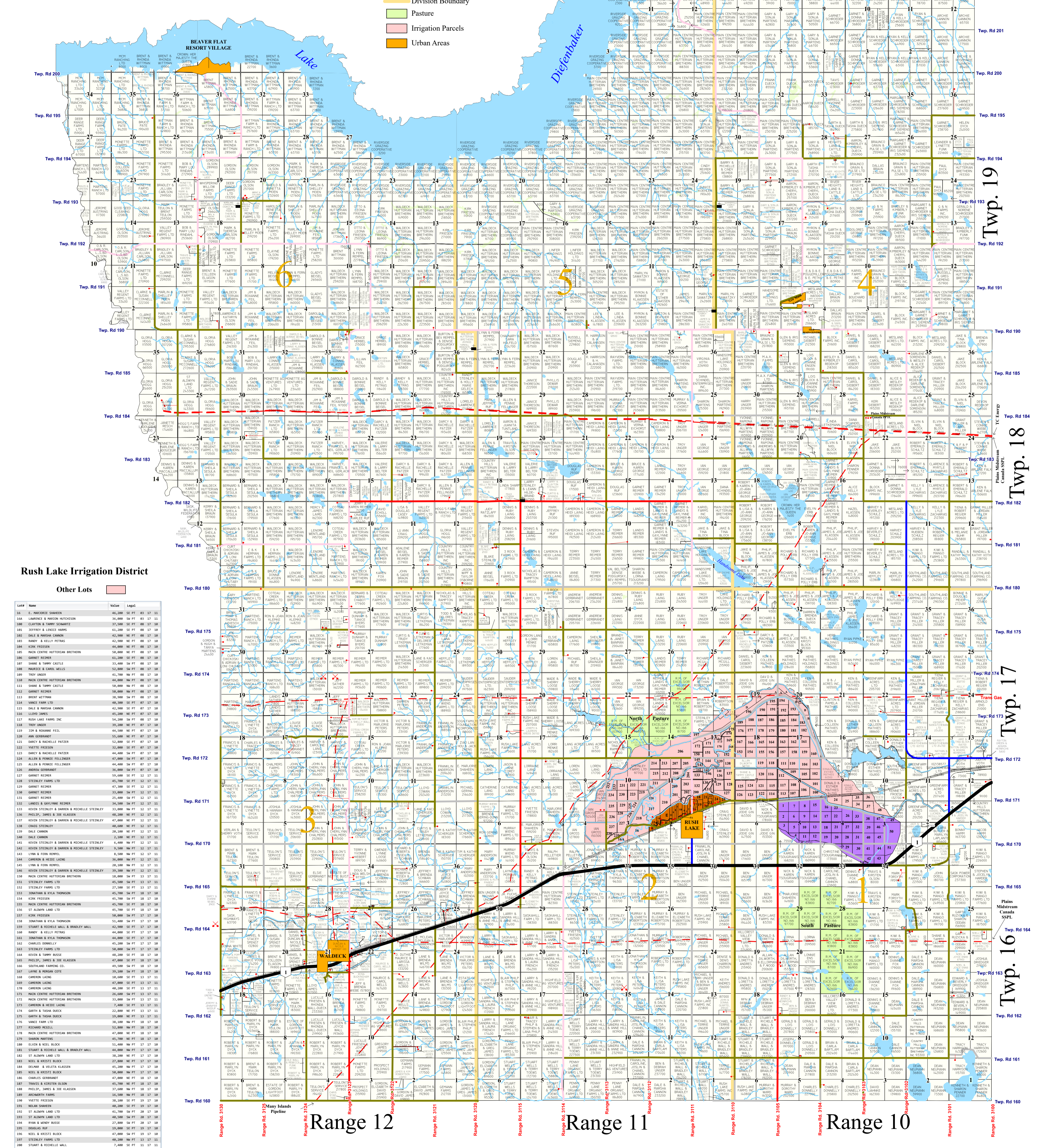
# RURAL MUNICIPALITY OF EXCELSIOR No. 166

WEST OF 3rd MERIDIAN

Box 180  
Rush Lake, SK. S0H 3S0  
Ph : 306-784-3121  
Fax : 306-784-3479  
Email : rm166@sasktel.net  
website : rm166.ca

Population : 806  
Office Days : Monday to Friday  
Meeting : 2nd Wednesday

- Reeve : Harv Schulz
  - Division 1 : Sharon Castle
  - Division 2 : Darren Steinley
  - Division 3 : Dan Spent
  - Division 4 : Jordan Miller
  - Division 5 : Don Mathies
  - Division 6 : Jim Feil
  - Administrator : Dianne Hahn
- ### Legend
- Highway
  - Class 6 Paved
  - Class 4 Gravel
  - Class Gravel 5
  - Class Gravel 6
  - Class 7
  - Laneways
  - Pipeline
  - Division Boundary
  - Irrigation Parcels
  - Urban Areas
  - Residences
  - Gravel Pit
  - Church
  - Vegetation
  - Watercourse
  - Waterbody
  - Regional Park



### Rush Lake Irrigation District

Lot	Name	Value	Legal
167	E. MARSHALL SHAWEN	46,200	SE PT 07 27 18
168	LAMBERT & MARION HENDERSON	36,000	SW PT 07 27 18
169	JEFFERY & LINDA HANES	61,200	NE PT 07 27 18
170	DALE & KATHY HANES	42,000	SE PT 07 27 18
171	KIM FEHSEN	44,000	NE PT 07 27 18
172	MAIN CENTRE HETTERMAN BRETHREN	61,200	SE PT 07 27 18
173	SHANE & TAMPY CASTLE	33,600	SW PT 07 27 18
174	SHANE & TAMPY CASTLE	56,800	NE PT 07 27 18
175	DALE & KATHY HANES	42,000	SE PT 07 27 18
176	DALE & KATHY HANES	42,000	SE PT 07 27 18
177	DALE & KATHY HANES	42,000	SE PT 07 27 18
178	DALE & KATHY HANES	42,000	SE PT 07 27 18
179	DALE & KATHY HANES	42,000	SE PT 07 27 18
180	DALE & KATHY HANES	42,000	SE PT 07 27 18
181	DALE & KATHY HANES	42,000	SE PT 07 27 18
182	DALE & KATHY HANES	42,000	SE PT 07 27 18
183	DALE & KATHY HANES	42,000	SE PT 07 27 18
184	DALE & KATHY HANES	42,000	SE PT 07 27 18
185	DALE & KATHY HANES	42,000	SE PT 07 27 18
186	DALE & KATHY HANES	42,000	SE PT 07 27 18
187	DALE & KATHY HANES	42,000	SE PT 07 27 18
188	DALE & KATHY HANES	42,000	SE PT 07 27 18
189	DALE & KATHY HANES	42,000	SE PT 07 27 18
190	DALE & KATHY HANES	42,000	SE PT 07 27 18
191	DALE & KATHY HANES	42,000	SE PT 07 27 18
192	DALE & KATHY HANES	42,000	SE PT 07 27 18
193	DALE & KATHY HANES	42,000	SE PT 07 27 18
194	DALE & KATHY HANES	42,000	SE PT 07 27 18
195	DALE & KATHY HANES	42,000	SE PT 07 27 18
196	DALE & KATHY HANES	42,000	SE PT 07 27 18
197	DALE & KATHY HANES	42,000	SE PT 07 27 18
198	DALE & KATHY HANES	42,000	SE PT 07 27 18
199	DALE & KATHY HANES	42,000	SE PT 07 27 18
200	DALE & KATHY HANES	42,000	SE PT 07 27 18

Lot	Name	Value	Legal
1	STENLEY FARMS LTD	54,200	NE PT 07 27 18
2	FRANK OLSON	33,600	NE PT 07 27 18
3	JAMES, DALE & MARSH CANON	33,600	NE PT 07 27 18
4	ARC	23,200	SE PT 07 27 18
5	LAMBERT & MARION HENDERSON	36,000	SW PT 07 27 18
6	STENLEY FARMS LTD	54,200	NE PT 07 27 18
7	DALE & KATHY HANES	42,000	SE PT 07 27 18
8	DALE & KATHY HANES	42,000	SE PT 07 27 18
9	NORRIS & ELIZABETH HENDERSON	54,200	NE PT 07 27 18
10	KENNEDY & LINDA HANES	21,000	SE PT 07 27 18
11	STENLEY FARMS LTD	54,200	NE PT 07 27 18
12	DONALD & LORETTA ANDRES	28,400	SE PT 07 27 18
13	DEAN NEUMAN	54,200	NE PT 07 27 18
14	DEAN NEUMAN	54,200	NE PT 07 27 18
15	DEAN NEUMAN	54,200	NE PT 07 27 18
16	DEAN NEUMAN	54,200	NE PT 07 27 18
17	DEAN NEUMAN	54,200	NE PT 07 27 18
18	DEAN NEUMAN	54,200	NE PT 07 27 18
19	DEAN NEUMAN	54,200	NE PT 07 27 18
20	DEAN NEUMAN	54,200	NE PT 07 27 18
21	DEAN NEUMAN	54,200	NE PT 07 27 18
22	DEAN NEUMAN	54,200	NE PT 07 27 18
23	DEAN NEUMAN	54,200	NE PT 07 27 18
24	DEAN NEUMAN	54,200	NE PT 07 27 18
25	DEAN NEUMAN	54,200	NE PT 07 27 18
26	DEAN NEUMAN	54,200	NE PT 07 27 18
27	DEAN NEUMAN	54,200	NE PT 07 27 18
28	DEAN NEUMAN	54,200	NE PT 07 27 18
29	DEAN NEUMAN	54,200	NE PT 07 27 18
30	DEAN NEUMAN	54,200	NE PT 07 27 18

Lot	Name	Value	Legal
1	DEAN NEUMAN	54,200	NE PT 07 27 18
2	DEAN NEUMAN	54,200	NE PT 07 27 18
3	DEAN NEUMAN	54,200	NE PT 07 27 18
4	DEAN NEUMAN	54,200	NE PT 07 27 18
5	DEAN NEUMAN	54,200	NE PT 07 27 18
6	DEAN NEUMAN	54,200	NE PT 07 27 18
7	DEAN NEUMAN	54,200	NE PT 07 27 18
8	DEAN NEUMAN	54,200	NE PT 07 27 18
9	DEAN NEUMAN	54,200	NE PT 07 27 18
10	DEAN NEUMAN	54,200	NE PT 07 27 18
11	DEAN NEUMAN	54,200	NE PT 07 27 18
12	DEAN NEUMAN	54,200	NE PT 07 27 18
13	DEAN NEUMAN	54,200	NE PT 07 27 18
14	DEAN NEUMAN	54,200	NE PT 07 27 18
15	DEAN NEUMAN	54,200	NE PT 07 27 18
16	DEAN NEUMAN	54,200	NE PT 07 27 18
17	DEAN NEUMAN	54,200	NE PT 07 27 18
18	DEAN NEUMAN	54,200	NE PT 07 27 18
19	DEAN NEUMAN	54,200	NE PT 07 27 18
20	DEAN NEUMAN	54,200	NE PT 07 27 18

Note: This map has been produced by MuniSoft for the R.M. Excelsior No. 166 using information supplied by others. Geospatial data and topographic data (Copyright Her Majesty the Queen in Right of Canada) have been provided by Information Services Corporation of Saskatchewan for the production of this map under license to the municipality. Duplication in whole or in part is prohibited. It is the responsibility of the user to verify the accuracy of the information since changes in assessment, ownership and other information may have changed since the time of printing. E&OE

